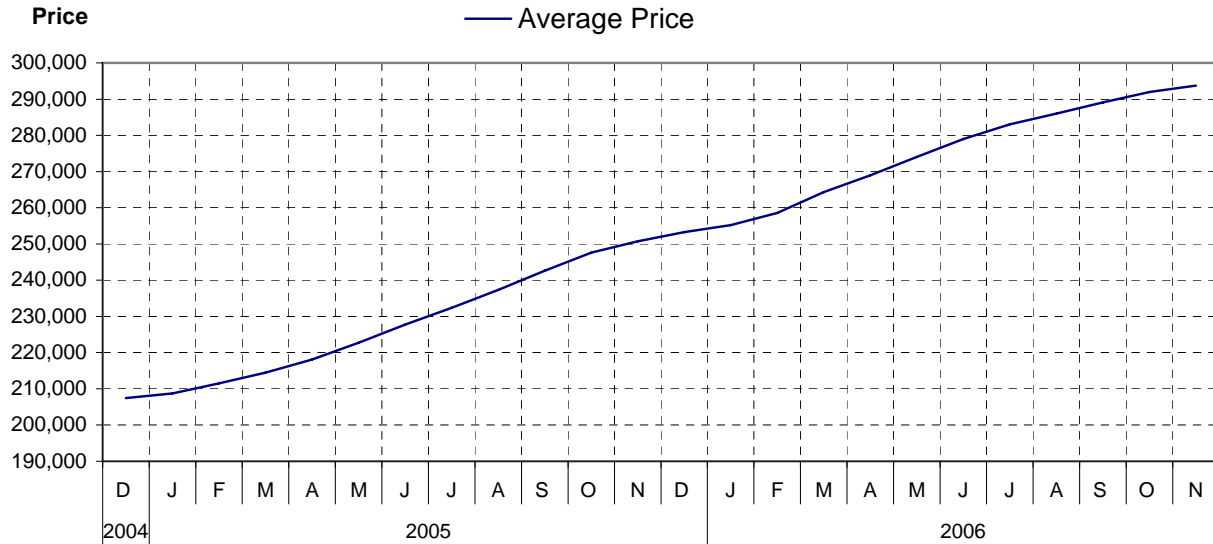


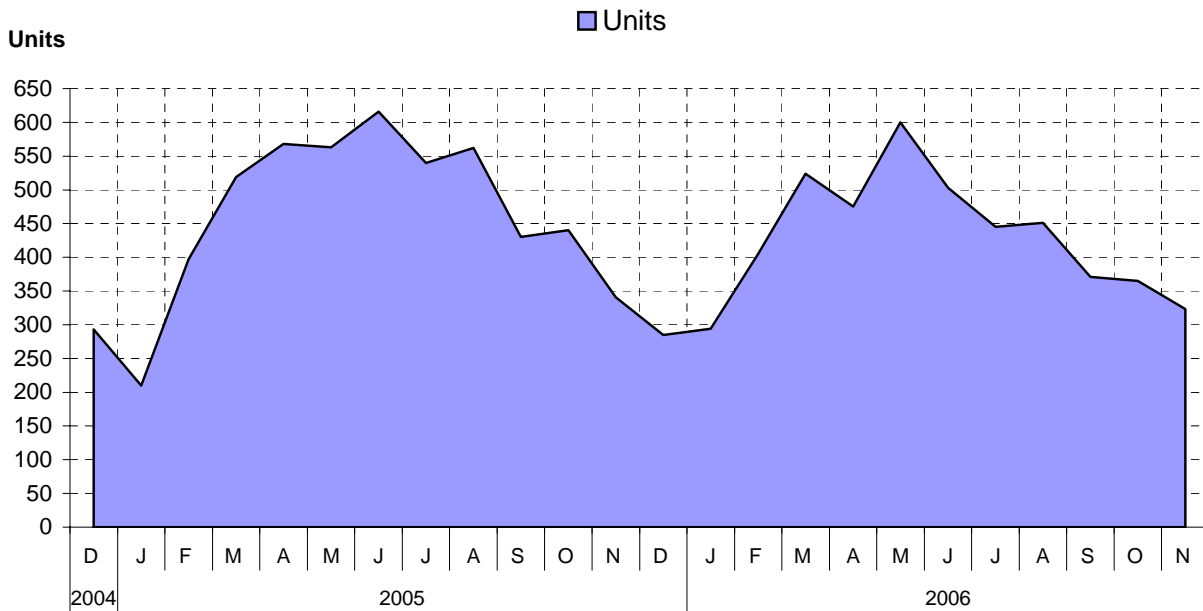
Board Area as at November 30, 2006

Cumulative Residential Average Single Family Sale Price



NOTE: Figures are based on a "rolling total" from the past 12 months – i.e. 12 months to date instead of the calendar "year to date".

Single Family Units Reported Sold



Comparative Activity by Property Type

(Reported Sales – Unconditional Sales Only)

	-----CURRENT MONTH-----			-----12 MONTHS TO DATE-----		
	THIS YEAR	LAST YEAR	% Change	THIS YEAR	LAST YEAR	% Change
LOTS						
UNITS LISTED	148	69	114 %	1,843	1,488	23 %
UNITS REPORTED SOLD	41	43	4-%	864	926	6-%
SELL/LIST RATIO	27 %	62 %		46 %	62 %	
REPORTED SALES DOLLARS	4,866,900	5,134,190	5-%	113,438,501	98,707,822	14 %
AVG SELL PRICE/UNIT	118,704	119,399	0 %	131,294	106,595	23 %
PRICE RATIO	97 %	97 %		98 %	97 %	
DAYS TO SELL	85	96	11-%	72	92	21-%
ACTIVE LISTINGS	736	484	52 %			

SINGLE FAMILY

UNITS LISTED	467	471	0 %	8,249	7,564	9 %
UNITS REPORTED SOLD	323	341	5-%	5,041	5,478	7-%
SELL/LIST RATIO	69 %	72 %		61 %	72 %	
REPORTED SALES DOLLARS	94,654,645	91,031,633	3 %	1,480,655,637	1,373,424,743	7 %
AVG SELL PRICE/UNIT	293,048	266,954	9 %	293,722	250,716	17 %
PRICE RATIO	97 %	97 %		98 %	98 %	
DAYS TO SELL	61	49	24 %	53	49	8 %
ACTIVE LISTINGS	1,923	1,541	24 %			

CONDOMINIUM (APT)

UNITS LISTED	111	72	54 %	1,606	1,432	12 %
UNITS REPORTED SOLD	88	89	1-%	980	1,099	10-%
SELL/LIST RATIO	79 %	123 %		61 %	76 %	
REPORTED SALES DOLLARS	18,582,400	12,529,775	48 %	184,257,286	152,714,408	20 %
AVG SELL PRICE/UNIT	211,163	140,783	49 %	188,017	138,957	35 %
PRICE RATIO	98 %	98 %		98 %	98 %	
DAYS TO SELL	86	52	65 %	64	54	18 %
ACTIVE LISTINGS	546	359	52 %			

CONDOMINIUM (TWNHSE)

UNITS LISTED	82	89	7-%	1,070	798	34 %
UNITS REPORTED SOLD	38	57	33-%	637	585	8 %
SELL/LIST RATIO	46 %	64 %		59 %	73 %	
REPORTED SALES DOLLARS	9,032,400	8,787,800	2 %	137,168,546	94,858,448	44 %
AVG SELL PRICE/UNIT	237,694	154,171	54 %	215,335	162,151	32 %
PRICE RATIO	98 %	98 %		98 %	98 %	
DAYS TO SELL	57	40	42 %	52	50	4 %
ACTIVE LISTINGS	317	168	88 %			

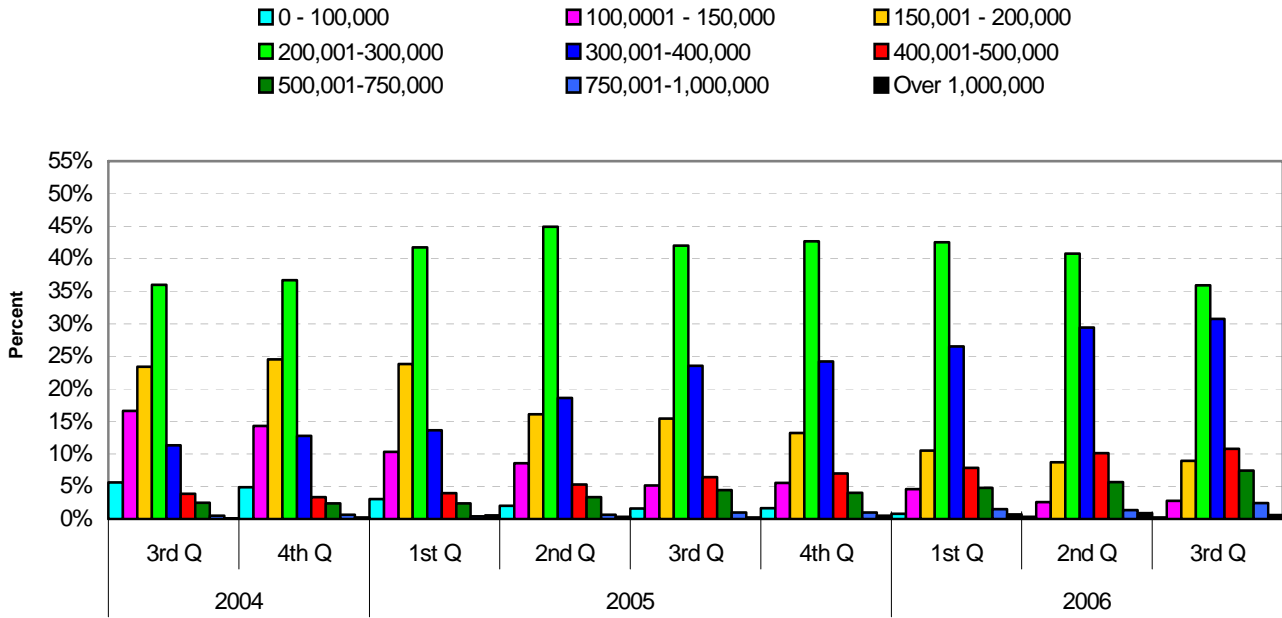
PLEASE NOTE:

SINGLE FAMILY property does NOT INCLUDE acreage with house, condominiums, duplex/triplex, mobile homes, single family waterfront or single family strata.

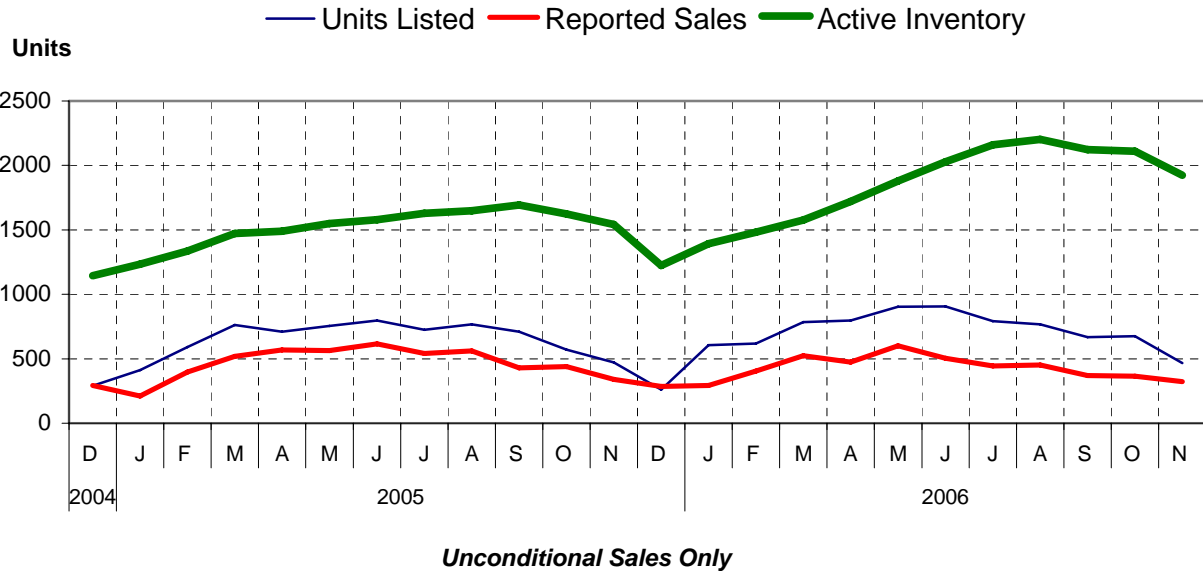
LOTS do NOT INCLUDE acreage or waterfront acreage.

COLLAPSE RATE – The collapse rate for all properties within the Board area was 1.9% for the current month.

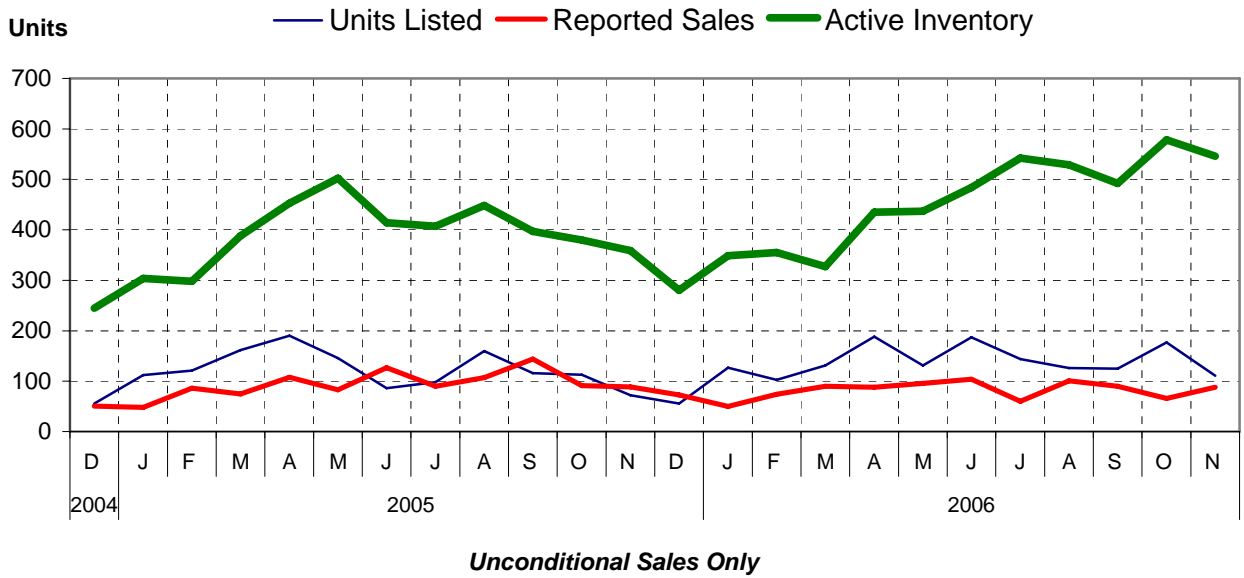
Percentage of Market Share by Price Range Board Area



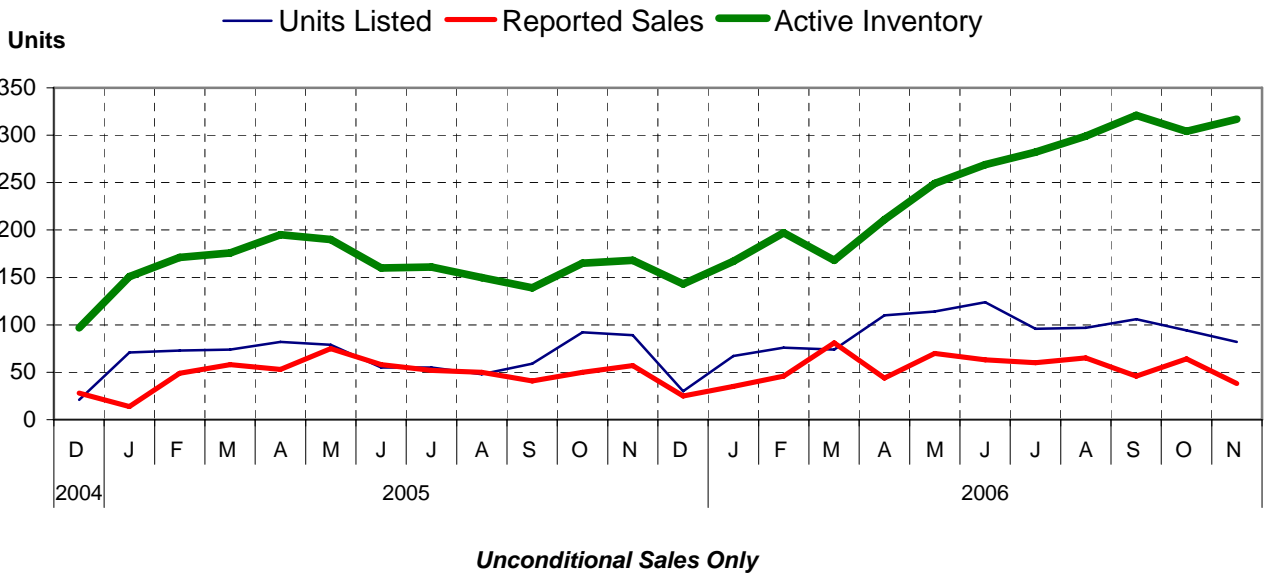
Single Family Comparisons between



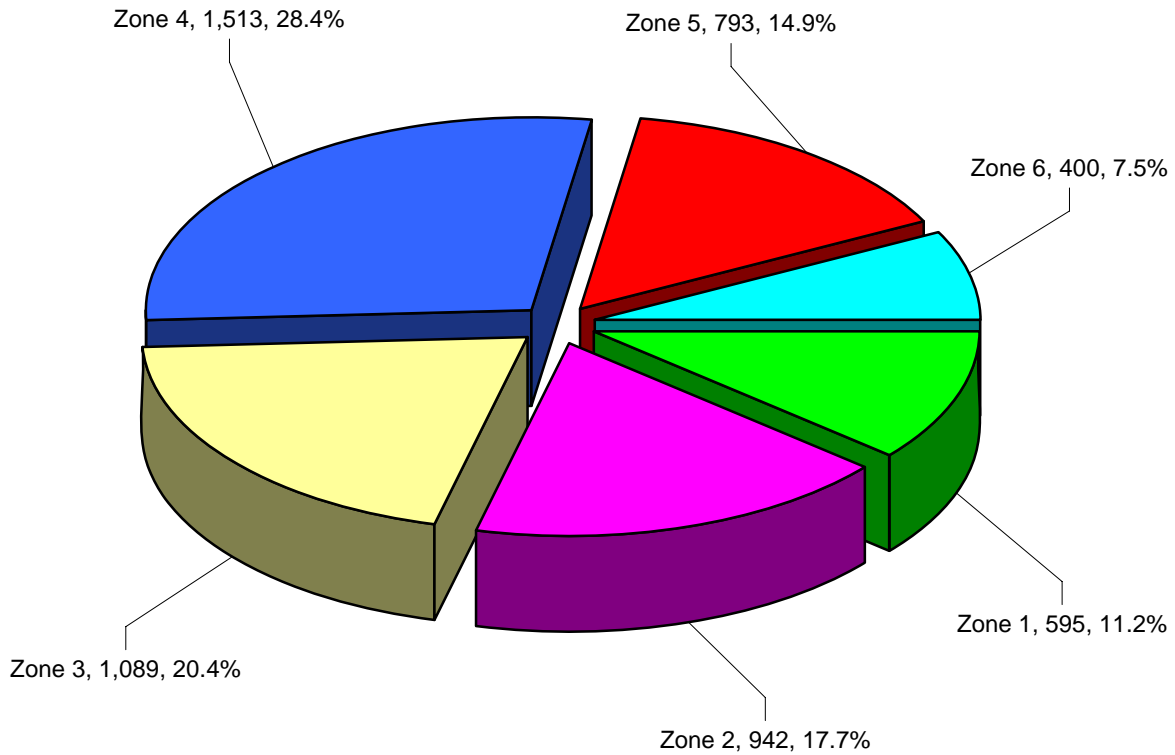
Condominium (Apartment) Comparisons between



Condominium (Townhouse) Comparisons between



MLS® Single Family Sales Analysis For Board Area – by Zone



Total Unconditional Sales January 1 to November 30, 2006 = 5,332

Zone 1 – Campbell River
Zone 2 – Comox Valley
Zone 3 – Cowichan Valley
Zone 4 – Nanaimo
Zone 5 – Parksville/Qualicum
Zone 6 – Port Alberni/West Coast